



VILLAGE ESTATES

• EST.1993 •



93 Main Road, Sidcup, Kent DA14 6ND

Tel: 0208 302 1002

www.village-estates.com

Email: sidcup@village-estates.com



EXTENDED TO REAR

**OUR LADY & DAYS LANE PRIMARY
SCHOOLS**

METICULOUSLY MAINTAINED

DRIVEWAY

GROUND FLOOR W.C.

EPC RATING 'C'



102 Fen Grove
Sidcup, DA15 8QQ

**Guide Price £450,000-
£475,000**

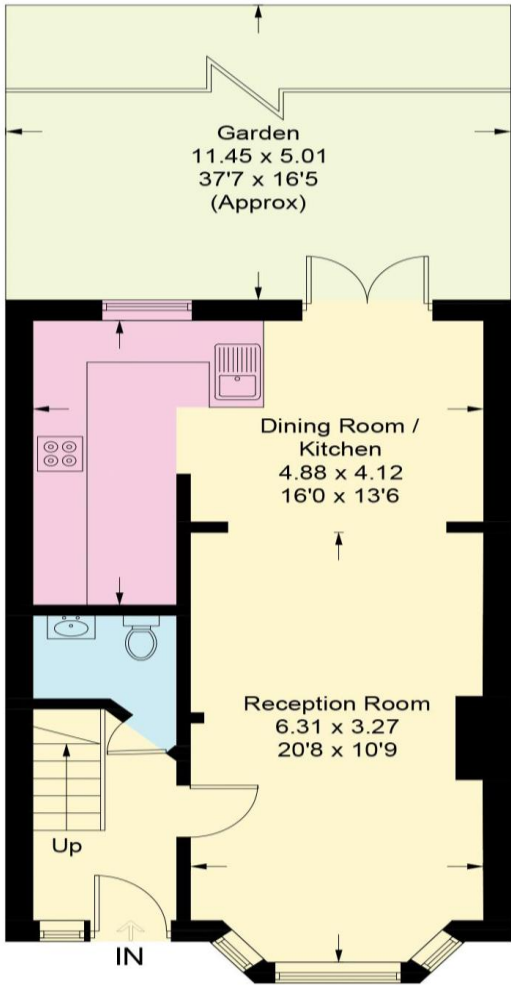
Well presented three bedroom terraced house located within the Days Lane primary school catchment area. Extended to the rear to provide an open plan kitchen diner and paved to the front offering off street parking. An excellent area for young families with parks, schools, shops all within walking distance.

EPC RATING: C

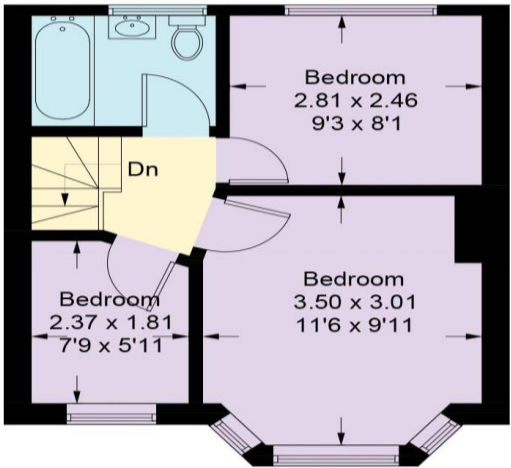
TENURE: Freehold

COUNCIL TAX BAND: D

LEASE TERM: Not Applicable



Approximate Gross Internal Area
74.1 sq m / 798 sq ft



CONSUMER PROTECTION FROM UNFAIR TRADING REGULATIONS 2008

Please note that any services, heating system or appliances have not been tested, and no warranty can be given or implied as to their working order. You are advised to obtain verification from your solicitor or surveyor. References to the tenure of a property are based on information supplied by the seller. We have not had sight of the title documents and a buyer is advised to obtain verification from their solicitor. Items shown in photographs are not included unless specifically mentioned within the sales particulars, but may be available by separate negotiation. Whilst every attempt has been made to ensure the accuracy of the floor plan contained here, measurements of doors, windows, rooms and any other items are approximate and no responsibility is taken for any error, omission, or mis-statement. We advise you to book an appointment to view before embarking on any journey to see a property, and check its availability. The accuracy of these details are not guaranteed and they do not form part of the contract.